

MODERNA

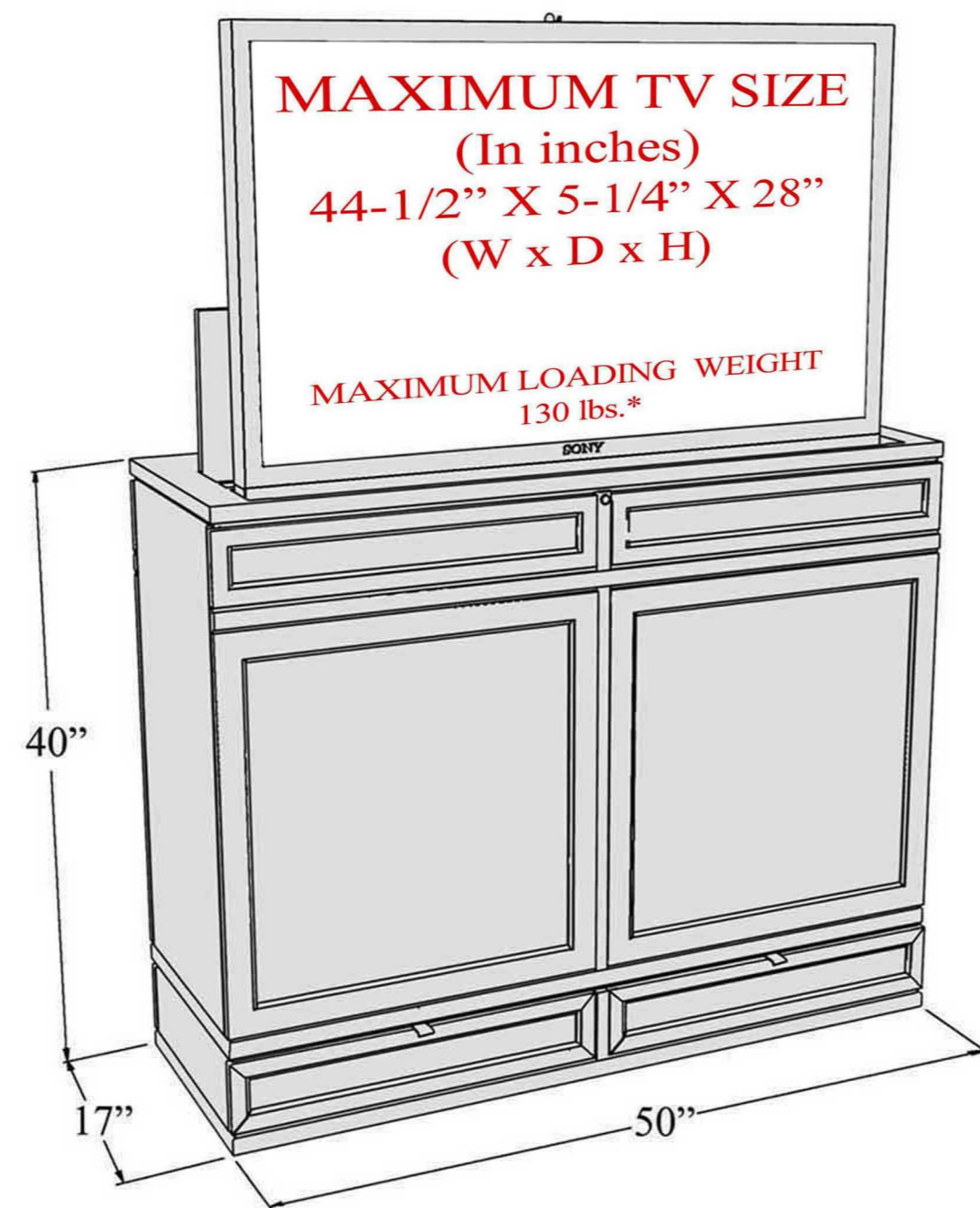
PLASMA CONSOLE (FOOT OF THE BED UNIT)

LIFT FEATURES:

- *Fully assembled.
- *1 year in home parts and labor warranty.
- *Radio Frequency Remote.
- *Universal TV mounting bracket included.
- *Auto reversing safety mechanism.
- *Heavy duty rack and pinion drive system.
- *Smooth and stable travel.
- *Nearly silent operation.
- *Welded steel construction.
- *Thermal overload protection.
- *Built in wire management.
- *Patent Pending.

CABINET FEATURES:

- *Fully assembled.
- *Built-in Infrared System.
- *Flip down bottom drawer faces to store electronic device.
- *Reversible cabinet over bottom drawers.
- *Multi step stain and scratch resistant finish.
- *Fully ventilated to allow for generous air circulation.



PERSPECTIVE



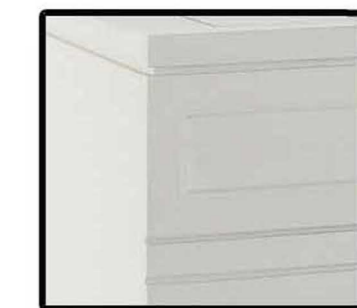
(Shown in CAMEL finish)



ESPRESSO

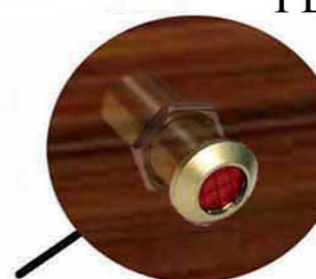


BLACK

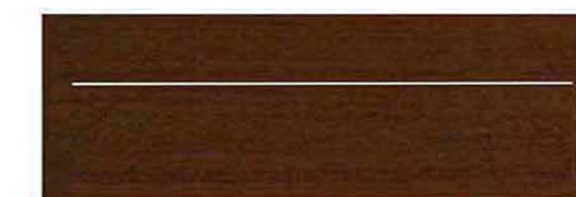


WHITE

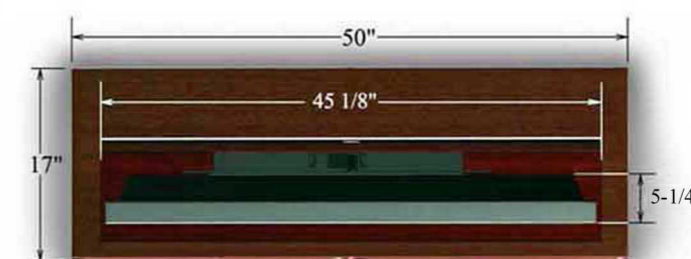
Also available in these colors



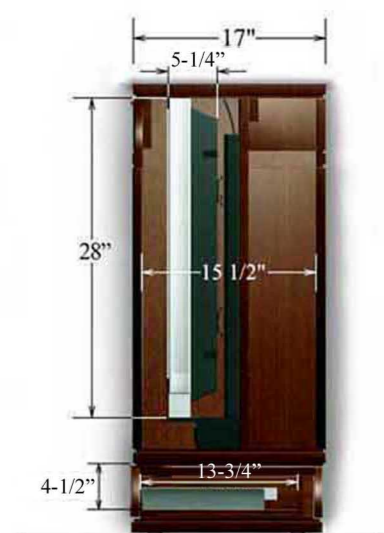
Infrared relay system provides a window from your handheld remotes to your TV and audio components even though they are concealed inside the cabinet. No programming required!



TOP VIEW (closed)



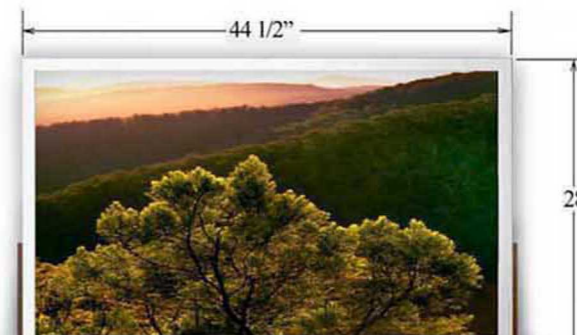
TOP VIEW (open)



SIDE SECTION



REAR VIEW



FRONT VIEW (open)



FRONT VIEW (closed)



SIDE VIEW