

# TAO-BR-5212

## PLASMA CONSOLE

### LIFT FEATURES:

- \*Fully assembled.
- \*1 year in home parts and labor warranty.
- \*Radio Frequency Remote.
- \*Universal TV mounting bracket included.
- \*Auto reversing safety mechanism.
- \*Heavy duty rack and pinion drive system.
- \*Smooth and stable travel.
- \*Nearly silent operation.
- \*Welded steel construction.
- \*Thermal overload protection.
- \*Built in wire management.
- \*Patent Pending.

### CABINET FEATURES:

- \* Fully assembled.
- \* Built-in Infrared Relay System.
- \* Multi-step stain and scratch resistant finish.
- \* Fully ventilated to allow for generous air circulation.



PERSPECTIVE



SHOWN IN BLACK

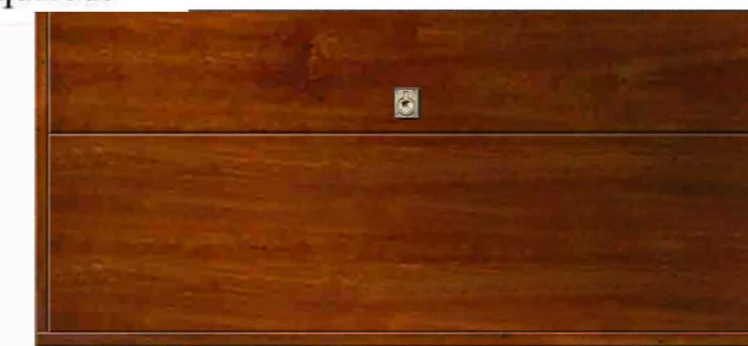
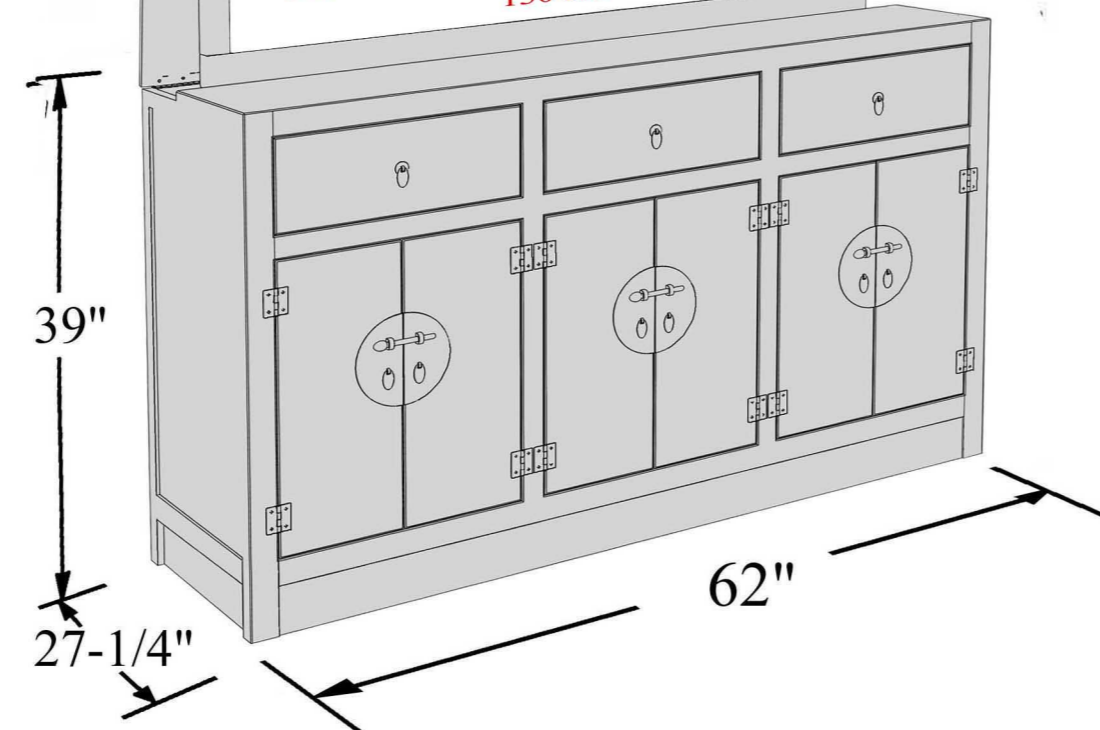


Infrared relay system provides a window from your handheld remotes to your TV and audio components even though they are concealed inside the cabinet. No programming required!



**MAXIMUM TV SIZE**  
(In inches)  
56" X 5" X 32-5/8"  
(W x D x H)

**MAXIMUM LOADING WEIGHT**  
130 lbs.\*



TOP VIEW



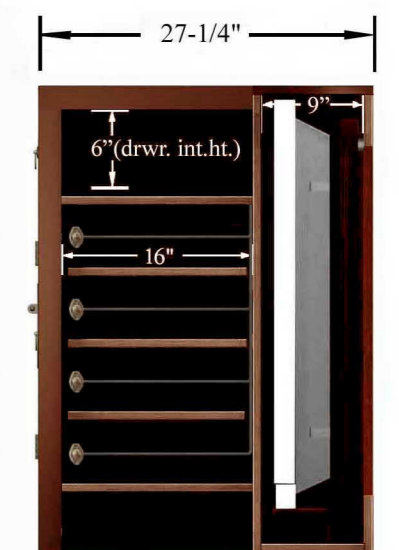
REAR VIEW



FRONT VIEW  
(shown with wooden panels on doors)



FRONT VIEW (interior)



SIDE VIEW

